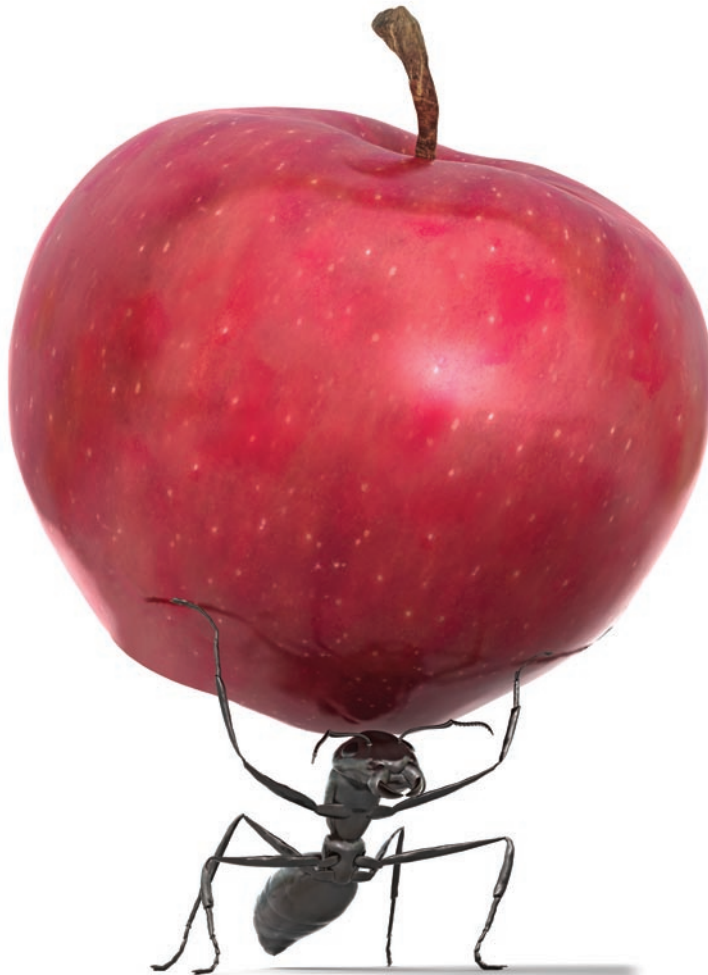


Canon
advanced simplicity®

imageRUNNER
iR C2550i

Small footprint, big colour impact.

The benefits of communicating your message in colour are well known. By combining your fax, copier, printer and scanner into one compact colour multifunction device, you can enjoy the benefits and not break the budget.



imageRUNNER iR C2550i

Every successful company looks for ways to reduce overall costs and improve productivity. Significant and repeatable savings can be found hidden in the collection of standalone printers, copiers, faxes and document scanners scattered throughout the average office. By leveraging these savings and adopting an MFD (multifunction device) strategy you can enjoy higher productivity with the added benefit of having colour output when you need it.

Slice your costs and increase your productivity. Visit canon.com.au/business to download this brochure.



Efficient printing and copying

To satisfy a busy office, the iR C2550i produces colour prints at 25 pages per minute and black & white prints at 23 pages per minute respectively.

Excellent print quality

With an output capability of up to 1,200 x 1,200 dpi¹ and 256 gradations, your documents will stand out with dynamic text, graphics and photos.

Canon's Multi-PDL printer kit

This device comes standard with everything you need for day-to-day printing. It features PCL 5c and PostScript 3 emulation drivers. Also included is Canon's UFR II (Ultra Fast Rendering) print driver for more efficient processing between PC and printer.

Super G3 fax option

Prevent bottlenecks with the Super G3 fax option that transmits faxes at only three seconds per page². Single and dual-line configurations available.

The iR C2550i fitted with additional paper cassettes and unique internal finisher



The iR C2550i fitted with additional paper cassettes, side paper deck and booklet finisher with hole punch unit



Simultaneous multi-task processing

This new technology combines printing, scanning and copying processors in one. Unlike traditional processing systems that act like an intersection where one function has to wait for another, it acts like a roundabout, making processing faster.

Powerful built-in server

To handle these heavy workloads, Canon's built-in server features a unique dual CPU system, 1.5GB of RAM and an 80GB hard drive.

Fast high quality scanning

Scanning at up to 44 images per minute keeps things moving, while 600 x 600 dpi capability ensures images are captured with complete clarity.

Compact four-drum design

Ideal for offices that are tight on space, the angled four-drum design of these devices, creates a footprint measuring just 565mm wide.

Fast to warm up and print

Canon's On-Demand fixing system reduces the warm-up and first print time, so there's virtually no waiting.

Quick Fixing colour toners

Canon's new Quick Fixing colour toners melt and fuse to paper rapidly at low temperatures.

On-device web access

For even greater convenience, the touch-screen display provides direct access to the Web. Ideal for intranet and kiosk applications, this optional feature makes it easy to access, download and print documents like commonly used forms, PDF documents, maps and newspaper articles without the need of a computer.

¹ Requires installation of the resolution enhancement board.

² Based on sending a standard document (Canon Fax Standard Chart No.1) to a Canon fax, excluding control times and without telephone line interference.

iR C2550i Multifunction features:

- **True simultaneous multi-tasking controller with Dual CPU, 1.5GB RAM and 80GB HDD**
- **Print at 25 pages per minute in black & white**
- **Print at 23 pages per minute in colour**
- **Up to 1200 x 1200 dpi print quality¹**
- **Precision scanning at up to 600 dpi**



Toner replacement is simple



Canon's compact four-drum engine design

Packed with features to improve business efficiency

Generous paper capacity

For interruption-free throughput, the already generous 1,100-sheet standard paper capacity can be expanded up to 4,950 sheets with the option to add two additional paper cassettes or a 2,700-sheet side paper deck.

Efficient paper handling

To minimise handling chores, the 50-sheet auto-duplexing document feeder handles all kinds of documents with ease.

Accommodates all kinds of stock

A 50-sheet by-pass tray accommodates stocks up to SRA3 in size and 220gsm in weight, as well as envelopes and prepunched paper.

Space-saving internal finisher

This unique space-saving option enables you to collate and staple direct from the device, without increasing its size.



Space-saving optional internal finisher

Extensive finishing options

Boasting the most extensive range of finishing options in its class, this device gives you a host of options for finishing your documents from simple collation, stapling and hole punching, through to automatic saddle stitched booklet making.

Convenient copy features

Copy Reservation saves up to five jobs in memory and then prints them when the device is free. Job Done sends an email notification when a job is complete.

Standard 50 sheet automatic document feeder

iR C2550i document handling features:

- Standard paper capacity of 1,150 sheets
- Maximum paper capacity of 4,950 sheets
- Unique internal finisher saves valuable space
- Accepts stock sizes up to SRA3
- Extensive finishing options from stapling and hole punching to saddle-stitch booklet making

Express Copy Menu

To speed up copying, program common sets of functions using the 'quick buttons' on the Express Copy menu.

Handy built-in mailboxes

imageRUNNER mailboxes are a convenient place to store things like frequently used forms for printing on demand. You can set up to 100 mailboxes and store up to 6,000 pages of information.

Advanced mailbox features

Use the advanced features to merge documents on the device before sending or printing. You can also register users' email addresses with a mailbox and then take advantage of URL Send. When a new document is added this function sends a link via email, instead of the document itself, thereby reducing network congestion.



Secure printing

For security, the Secured Print feature delays printing until a password is entered at the device. And for simplicity, the Simple Device Login and Single Sign-On features allow existing network IDs and passwords to be used.

Embedded remote monitoring software

Canon's optional eMaintenance service is a remote device management solution designed to optimise the productivity of your imageRUNNER device and help save your business time and money. Using Remote Diagnostic System (RDS) software embedded in these devices, eMaintenance allows a dedicated Canon server to collect automatic device meter readings and monitor maintenance requirements and performance remotely.

Easy-to-use display

The large, colour, touch-screen display embodies Canon's commitment to simplicity of use. Clear, intuitive menus make copying, printing, sending and more complex editing and manipulation of documents a breeze.



Protect information

If information security is important in your organisation, the optional HDD Erase and Encryption Kits prevent information falling into the wrong hands with 128-bit data encryption and multiple levels of hard disk overwriting.

iW Management Console

This highly-scalable, web-based software utility makes it easy to set-up and manage devices on a network.



Flexible paper handling options provide up to six paper sources.

Convenient Remote User Interface

For convenience, you can control the device from your workstation. From this web-based utility you can check job status, access device mailboxes, add new users and more.

Equal Access for all

Optional Equal Access features help the visually impaired and those with physical disabilities. The Voice Guidance feature confirms settings as they are entered, while the Remote Operator feature mirrors the device's display on a workstation or laptop.



Send to email, desktop or other networked devices with Universal Send

Scan, save and send in one step

With this Canon technology, you can scan, save and send documents in digital formats such as PDF, JPEG and TIFF.

In one step, you can scan a document and:

- Email it to an individual or group
- Store it in an iR C2550i mailbox
- Send it as an iFAX over the Internet
- Send it to a folder on your desktop or on the network

Secure PDF scanning kit

This optional kit features two functions for secure PDF sharing. The Encrypted PDF function encrypts and password-protects documents and also controls things like who can print or make changes to a file.

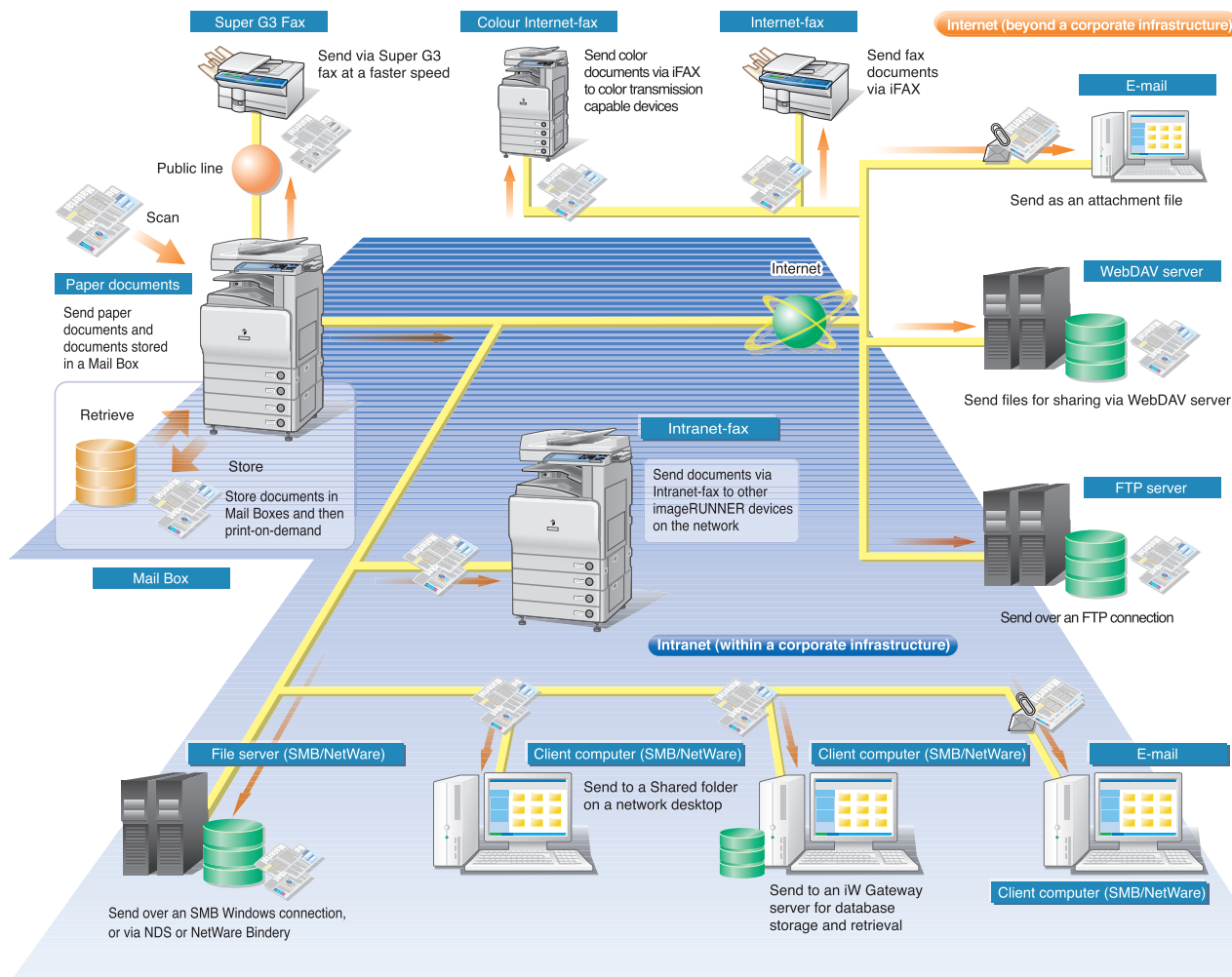
The Device Signature function will embed a digital signature so the recipient can confirm the authenticity of the document.

Advanced PDF scanning kit

This optional kit provides three fantastic enhancements.

With PDF Compact, you don't need to worry about full-colour documents clogging your network. Selecting PDF Compact when scanning, will produce a document with all the versatility of regular PDF at up to a tenth the size. The Searchable PDF function makes life easy when you need to retrieve information later using Adobe Acrobat. By selecting Searchable PDF when scanning, documents are saved as full-text searchable PDF documents automatically.

Another unique function is Trace & Smooth PDF which analyses the components of your document and optimises the reproduction of text and images, whilst maintaining low file sizes. It also converts line art work into editable vector graphics format.



Canon MEAP technology

MEAP or Multifunctional Embedded Application Platform is a significant step forward for multifunction devices. This Canon proprietary technology allows you to customise the functions of this device to suit your organisation's processes and document workflow. The open-platform technology allows customised business applications to be installed on the device and accessed from its large, touch-screen display.



MEAP applications can be operated directly from the touch-screen

Unlimited adaptability

With an appropriate MEAP application installed on the device, it can be taught to know the difference between various documents and where to electronically route them for processing and approval

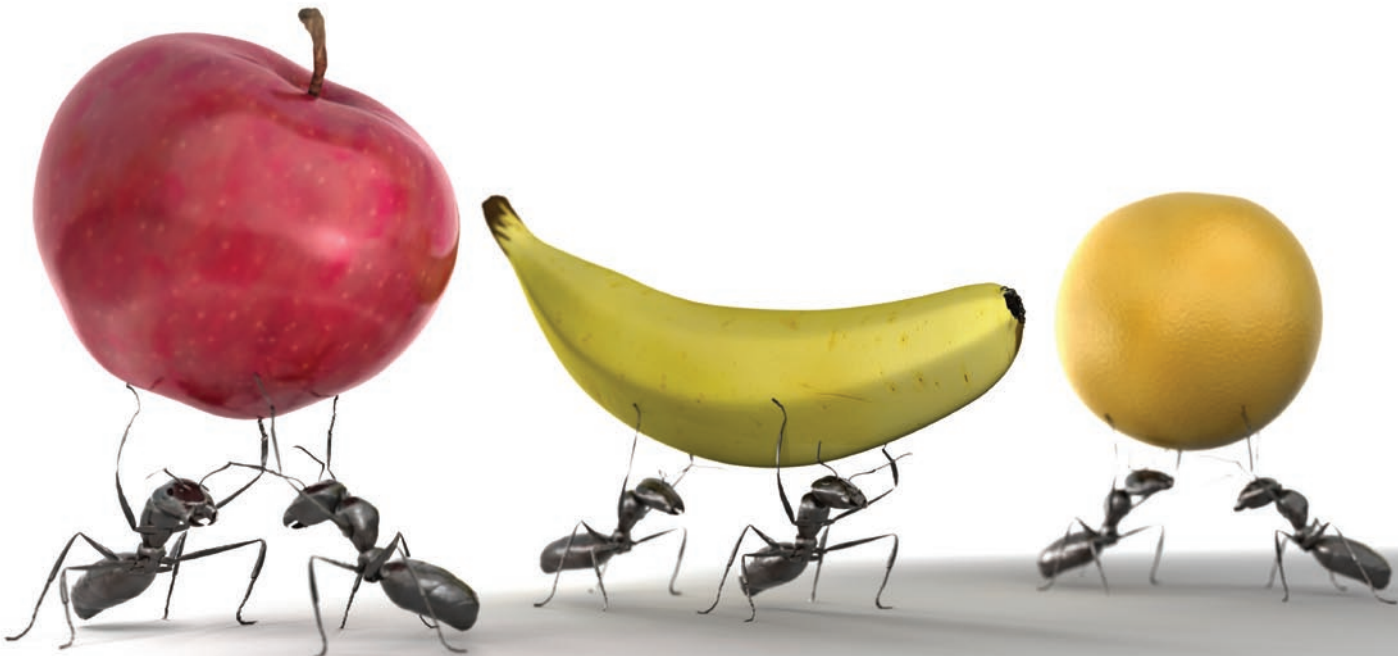
once scanned. A simple example could be a hotel checkout where guests can view, approve and print their bills on demand, right from the device's touch-screen display. With this kind of adaptability, the possibilities for tailoring a device's functions to a particular industry or organisation are endless.

Canon Document Solutions

To improve organisational efficiency even further, this device can be teamed with Canon's Document Solutions software. This family of advanced applications works in unison with Canon imageRUNNERS to enhance the way an organisation captures, stores, retrieves and communicates information. Canon Document Solutions incorporate a range of software applications that together encompass every aspect of an organisation's document workflow. A selection of applications from Canon and its partners is offered so we can match a solution to your exact needs.

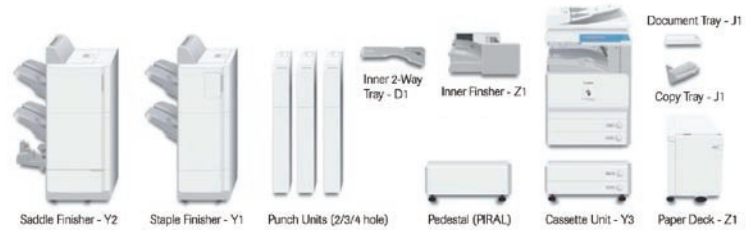
Environmentally friendly

Canon's "eco-tech" approach to creating products emphasises harmony between ecology and technology. From product design to manufacture, we work to conserve energy, maximise product lifecycles and eliminate hazardous materials. This environmentally friendly device also complies with the European Union's Restriction of Hazardous Substances (RoHS) directive. Considered the most stringent environmental directive in the world, its aim is to eliminate six hazardous substances from products.



Specifications

iR C2550i



BASIC SPECIFICATIONS

Type	Colour Digital Multifunction Imaging
Imaging System	Laser Dry Electrostatic Transfer
Developing System	Dry, dual component system
Fixing System	On-Demand Fixing Method
Transfer System	Intermediate Transfer Belt and Roller
Charging method	Ozone-less Roller
CPU	imageCHIP Dual CPU design
Interface	10/100Base-TX (RJ-45), USB 2.0 (Device)USB 2.0 (Host)
First Copy (B&W/Colour)	5.9 / 8.9 seconds
Warm-up Time	38 seconds or less
Maximum Original Size	A3
Copy Sizes	Cassette A5R - 305mm x 457mm Manual 100mm x 148mm - 320mm x 457mm
Mail Boxes Supported	100
Max. Copy Reservation	5 Jobs
Memory	1.5GB (standard and maximum)
Hard Disk Drive	80GB
Resolution	Scanning 600 x 600 dpi Copying 1200 (equivalent) x 600 dpi (true) Printing 600 x 600 dpi (true) 1200 x 1200 dpi (optional)
Halftone	256 gradations
Density Adjustment	Automatic Exposure / Manual (Switchable/ 9 Stages)
Engine Speeds (A4)	25/23ppm (B&W/Colour)
Duplexing	Standard automatic tray-less
Magnification	Standard Mode 100% Presets 5 reductions / 4 enlargements Copy Ratio 25 to 400% (in 1% increments)
Multiple Copies	1 - 999 Standard Dual 550-sheet Cassettes (1100 sheets) Stack by-pass (50 sheets) Optional Dual 550-sheet Cassettes (1100 sheets) Side Paper Deck (2,700 sheets) Max. Total = 4,950 Sheets
Paper Weights	64 to 163gsm (Cassettes) 64 to 220gsm (Manual)
Dimensions (W x D x H)	565mm x 755mm x 791mm
Weight	Approx 125kgs
Power Supply	230v/6A/50Hz
Power Consumption	Max. 1,500W, Standby 80W, Sleep 3W
Maximum Ozone	Initial 0.01 ppm, After use 0.035ppm

DADF-L1 (STANDARD)

Type	Duplexing Automatic Document Feeder
Originals Size	A5R - A3
Paper Weights	1-Sided: 42 to 128 gsm 2-Sided: 50 to 128gsm
Original Tray Capacity	50 sheets (80gsm)
Scanning Speed	Copy: A4 28ipm 600dpi, Scan: A4 44ipm, 300dpi (Colour/B&W)
Dimensions (W x D x H)	565mm x 538mm x 122mm
Weight	Approximately 8.5kgs

CASSETTE FEEDING UNIT -Y3 (OPTIONAL)

Number of Drawers	2 Front-loading Adjustable Drawers
Paper Size	305 x 457mm, A3, A4, A4R, A5R
Paper Feeding Capacity	550 sheets x 2 cassettes (80gsm)
Paper Weights	64 to 163gsm
Dimensions (W x D x H)	565mm x 700mm x 251.5mm
Weight	Approximately 23kgs

PAPER DECK-Z1 (OPTIONAL)

Paper Size	A4
Paper Feeding Capacity	2,700 sheets (80gsm)
Paper Weights	64 to 105gsm
Dimensions (W x D x H)	372mm x 591mm x 473mm
Weight	Approximately 30kgs

INTERNAL FINISHER-Z1 (OPTIONAL)

No. of Trays	One stack tray - inner
Paper Size/Capacity	A4- A5R: 500 sheets, A3-A4R: 250 sheets
Paper Weights	64 to 220gsm
Tray Capacity	A4: 500 sheets, A3: 250 sheets
Staple mode	A4: 50 sheets, A3: 30 sheets
Stapling Sizes	Corner Stapling: A3, A4
Weight	Approximately 13kgs

FINISHER-Y1 (OPTIONAL)

Number of Trays	Two trays
Acceptable Paper Sizes	99mm x 140mm - 305mm x 457mm
Acceptable Paper Weights	64 - 220gsm
Tray Capacity	Top Tray - 1000 sheets (A4) Lower Tray - 1000 sheets (A4)
Staple Positions	1 - any corner, 2 - side margin
Staple Capability	50 sheets (A4), 30 sheets (A3)
Dimensions (H x D x W)	1,073 x 657 x 643 mm
Weight	Approximately 43.6 kg

SADDLE FINISHER-Y2 (OPTIONAL)

Number of Trays	Two trays
Acceptable Paper Sizes	99mm x 140mm - 305mm x 457mm
Acceptable Paper Weights	64 - 220gsm
Tray Capacity	Top Tray - 1000 sheets (A4) Lower Tray - 1000 sheets (A4)
Staple Positions	Multi-position Stapling
Staple Capability	Top Corner, Side Margin & Saddle stitch 50 sheets (A4), 30 sheets (A3)
Saddle Stitch Specifications	Paper Sizes A4R - 305mm x 457mm Paper Weight 64 to 105gsm Stapling Capacity 1 to 15 sheets (60 pages, 64-80gsm); 1 to 10 sheets (40 pages, 81-105gsm) Folding V-folding Standard
Dimensions (H x D x W)	1,073 x 657 x 747 mm
Weight	Approximately 73.6 kg

COLOUR NETWORK MULTI -PDL PRINTER KIT (STANDARD)

PDL	UFR II, PostScript3, PCL5c
Hard Disk	80GB (Shared)
Memory	1.5GB (Shared)
CPU	imageCHIP Dual CPU design
Resolution	UFR II, PS3 1200 x 1200dpi (true) 2400 (equivalent) x 1200dpi (half speed) PCL5c 2400 (equivalent) x 600dpi
Supported OS:	UFR II Windows 2000/XP/Server 2003/Vista, Citrix MetaFrame, Mac OS (10.2.8 or later) PS3 Windows 2000/XP/Server 2003/Vista, Citrix MetaFrame, Mac OS (10.2.8 or later) PCL5c Windows 2000/XP/Server 2003/Vista
Interface	100BASE TX/10BASE-T, USB 2.0 Device)
Network Protocol	TCP/IP (LPD / FTP / Port9100 / IPP / IPPS, SMB / email), IPX / SPX (NDS, Bindery, NDPS-GW), AppleTalk (PAP)

COLOUR UNIVERSAL SEND KIT (STANDARD)

Type	Colour network push scanning
Scanning Resolutions	100 / 150 / 200 / 300 / 400 / 600dpi
Scanning Speed	44ipm (B&W and Colour at 300dpi)
Address Book Capacity	1,800 (includes 200 One-Touch Keys) Maximum 5 LDAP Servers
Interface	100BASE TX/10BASE-T, USB 2.0 (Device)
Protocols	File SMB / FTP (TCP/IP) / NCP (IPX) / WebDAV Email/IFAX SMTP / POP3 / iFAX (Simple, Full) Supported Formats JPEG / TIFF (MMR) / MTIFF / PDF Encrypted PDF / Searchable PDF (OCR) / Trace and Smooth PDF / Compact PDF / Device Signature PDF / User Signature PDF

ADDITIONAL OPTIONAL ACCESSORIES

- Super G3 Fax (Single line)
- Inner 2-way Tray D1
- Buffer Pass Unit-E2
- Hole Punch Units 2/3/4 holes
- Secure PDF Kit-A1
- Barcode Print Kit-A1
- Hard Disk Encryption Kit-B1
- Voice Guidance Kit-B1
- Local Pedestal
- Remote Operator Kit-A2
- Super G3 Fax (Dual-line)
- Copy Tray J1
- Document Tray-J1
- Advanced PDF Kit-A1
- Digital User Signature PDF-A1
- Web Access Software Kit-E1
- Hard Disk Erase Kit-A1
- Voice Operation Kit-A1
- Secure Watermark Kit-A1



™ All company and/or product names are trademarks and/or registered trademarks of their respective manufacturers in their markets and/or countries.

Canon reserves the right to change specifications without notice.

Canon
advanced simplicity®

AUSTRALIA

Sydney 1 Thomas Holt Drive North Ryde NSW 2113 Ph (02) 9805 2000 Fax (02) 9887 3650	Melbourne 33 Lakeside Drive Burwood East VIC 3151 Ph (03) 9881 0000 Fax (03) 9881 0444	Brisbane Southgate Corporate Park 18 Southgate Avenue Cannon Hill QLD 4170 Ph (07) 3909 5000 Fax: (07) 3909 5066
--	---	--

Adelaide 1 South Road Thebarton SA 5031 Ph (08) 8201 9100 Fax (08) 8352 5365	Perth 68 Hasler Road Osborne Park WA 6017 Ph (08) 9347 2222 Fax (08) 9242 4120
---	---

Canberra 98 Barrier Street Fyshwick ACT 2609 Ph (02) 6206 5999 Fax (02) 6206 5933	Auckland Akoranga Business Park Akoranga Drive Northcote Ph (09) 489 0300 Fax (09) 489 0380
--	---

NEW ZEALAND

canon.com.au