

Canon
advanced simplicity®

imageRUNNER
iR C3180i

**Beautiful office colour and efficient
black & white in one.**

Until now owning an in-house colour printer was a big financial step. In an ideal world, you'd be able to switch the colour on when you need it and return to the economy of black & white when you don't. The imageRUNNER iR C3180i does just this.



imageRUNNER iR C3180i

This colour-capable black & white device with automatic colour sensing technology has the speed and economy of black & white devices, with the option of affordable, controllable colour when you need it for proposals, presentations and marketing material. Plus, with built in MEAP technology to simplify your document processes, and convenient options like Colour Universal Send and an on-device Web browser, the iR C3180i make high-end multifunction convenience available to every business.



High-speed printing and copying

Printing at 31 pages per minute in black and white, and seven pages per minute in colour, the iR C3180i has the speed to ensure your staff aren't kept waiting, even during busy periods.

Generous paper capacity

For interruption-free throughput, the already generous 1,100-sheet standard paper capacity can be expanded up to 4,750 sheets with the option to add two additional paper cassettes or a 2,500-sheet side paper deck.

Excellent print quality

A high print resolution of 9,600 x 600dpi (maximised) ensures that documents are produced with complete clarity and fidelity. The fine grain structure of Canon's innovative polymerised toner renders lines with precision and smooths the gradations between shades.

Versatile paper handling

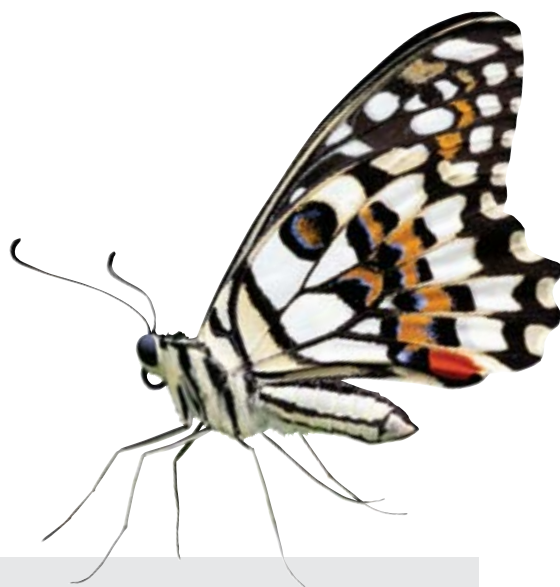
To minimise paper handling chores, the large, 50-sheet Duplexing Automatic Document Feeder handles single-page, multiple-page and double-sided documents, even documents with different size pages, with equal ease.

Convenient copy features

Save time with features like Copy Reservation that allows up to five print jobs to be scanned into memory then printed automatically when the device is free. The Job Done feature sends an email notification when a job is complete.

Accurate scanning

Precision 600 x 600dpi scanning ensures that every document is reproduced with complete accuracy. For scanning efficiency, these devices include features like Scan-Once-Print-Many for easy, one-step printing of multiple documents from a single scan.



Multifunction features:

- **Print up to 31 pages per minute in black & white**
- **Print at seven pages per minute in colour**
- **High print quality of 9,600 x 600dpi**
- **Precision 600 x 600dpi scanning**
- **Generous 4,750-sheet paper capacity**

Simultaneous multi-task processing

This new technology combines printing, scanning and copying processors in one. Unlike traditional processing systems that act like an intersection where one function has to wait for another, it acts like a roundabout, making processing faster.

Secure printing

For security, the Secured Print feature delays printing until a password is entered at the device. And for simplicity, the Simple Device Login and Single Sign-On features allow existing network IDs and passwords to be used.

Convenient Remote User Interface

Many features can be controlled easily from a workstation with the Remote User Interface (RUI) application - check job status, access device mailboxes, add new users and more via a standard Web browser.

Send to email, desktop or other networked devices with universal send

Scan, save and send in one step

With this Canon proprietary technology, you can scan, save and send documents in common digital formats such as PDF, JPEG, TIFF and MTIFF. In one step, you can scan a document and:

- Email it to an individual or group
- Save it on your network
- Store it in an iR C3180i mailbox
- Send it as an iFAX over the Internet
- Send it to a folder on your desktop

Secure information sharing

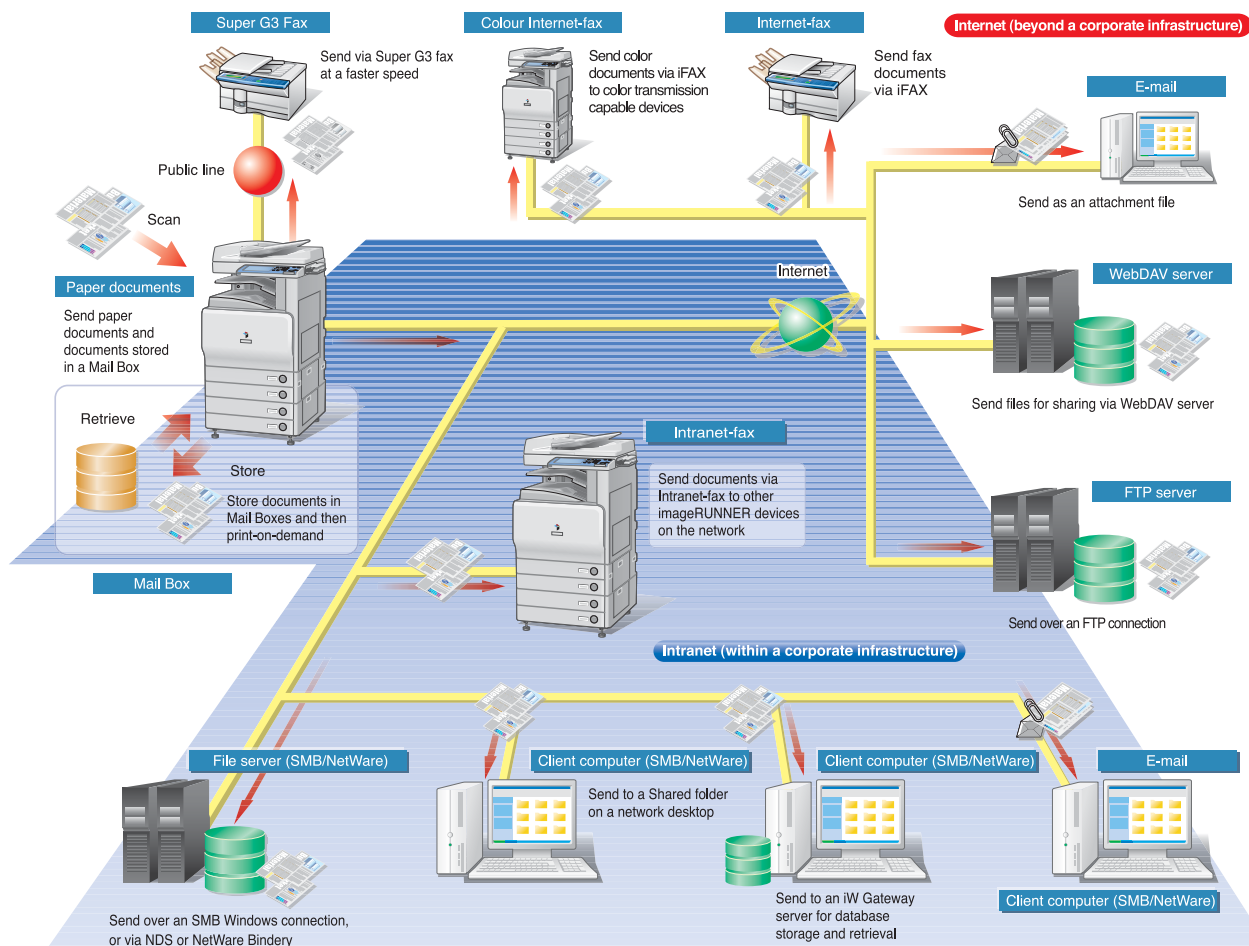
For the secure sharing of information, PDF documents can be password protected using Universal Send's optional PDF Encryption feature. With it, you can control things like who can print or make changes to a document. For added safety, documents can be tagged and tracked using the Send ID feature.

PDF made compact

With PDF Compact, you don't need to worry about full-colour documents clogging your network. By simply selecting PDF Compact when scanning, will produce a document with all the versatility of regular PDF at up to a tenth the size.

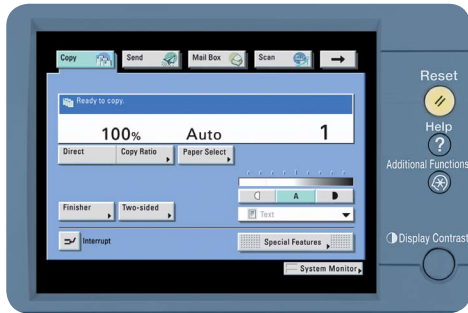
Find information fast

The Searchable PDF option makes life easy when you need to retrieve information later using Adobe Acrobat. By selecting Searchable PDF when scanning, documents are saved as full-text searchable PDF documents automatically.



Easy-to-use display

Large, colour, touch-screen displays embody Canon's commitment to simplicity of use. Clear, intuitive menus make copying, printing, sending and more complex editing and manipulation of documents a breeze.



On-device Web access

For even greater convenience, touch-screen displays provide direct access to the Web. Ideal for intranet and kiosk applications, this optional feature makes it easy to access, download and print documents like commonly used forms, PDF documents, maps and newspaper articles without the need of a computer. This great time saving feature also allows you to save the locations of frequently used documents as 'favourites' for printing when required. Plus, it allows administrators to do things like adjust Internet security settings as required.

Express Copy feature

To simplify copying, commonly used sets of functions can be programmed using the Express Copy feature. So rather than drilling through layers of menus, common features are accessible via 'quick buttons' on the Express Copy menu.

Automatic Colour Sensing technology

Canon's Automatic Colour Sensing technology eliminates toner wastage. It senses the difference between black & white and colour in a document, only printing colour when required. At other times, it defaults to black & white to keep costs down.



Digital document workflow

Canon MEAP technology

MEAP or Multifunctional Embedded Application Platform is a significant step forward for multifunction devices. This Canon proprietary technology allows you to customise the functions of these devices to suit your organisation's processes and document workflow. This open-platform technology allows customised business applications to be installed on the device and accessed from its large, touch-screen display.

Canon Document Solutions

To improve organisational efficiency even further, these devices can be teamed with Canon's Document Solutions software. This family of advanced applications works in unison with Canon imageRUNNERS to enhance the way an organisation captures, stores, retrieves and communicates information. Canon Document Solutions incorporates seven categories of software applications that together encompass every aspect of an organisation's document workflow. A selection of applications from Canon and its partners is offered in each category, so we can match a solution to your exact needs.

Unlimited adaptability

With an appropriate MEAP application installed on the device, it can be taught to know the difference between various documents and where to electronically route them for processing and approval once scanned. A simple example could be a hotel checkout where guests can view, approve and print their bills on demand, right from the device's touch-screen display. With this kind of adaptability, the possibilities for tailoring a device's functions to a particular industry or organisation are endless.

Extensive finishing options

Boasting the most extensive range of finishing options in their class, these devices give you a host of options for finishing your documents from simple collation, stapling and hole punching, through to automatic saddle stitched booklet making.



Efficient fax communication

For organisations where efficient fax communication is a necessity, the iRC3180i offers both single and dual-line Super G3 fax options. With the three seconds per page* speed of Super G3 and the convenience of dedicated incoming and outgoing lines, fax has never been faster.

Environmentally friendly

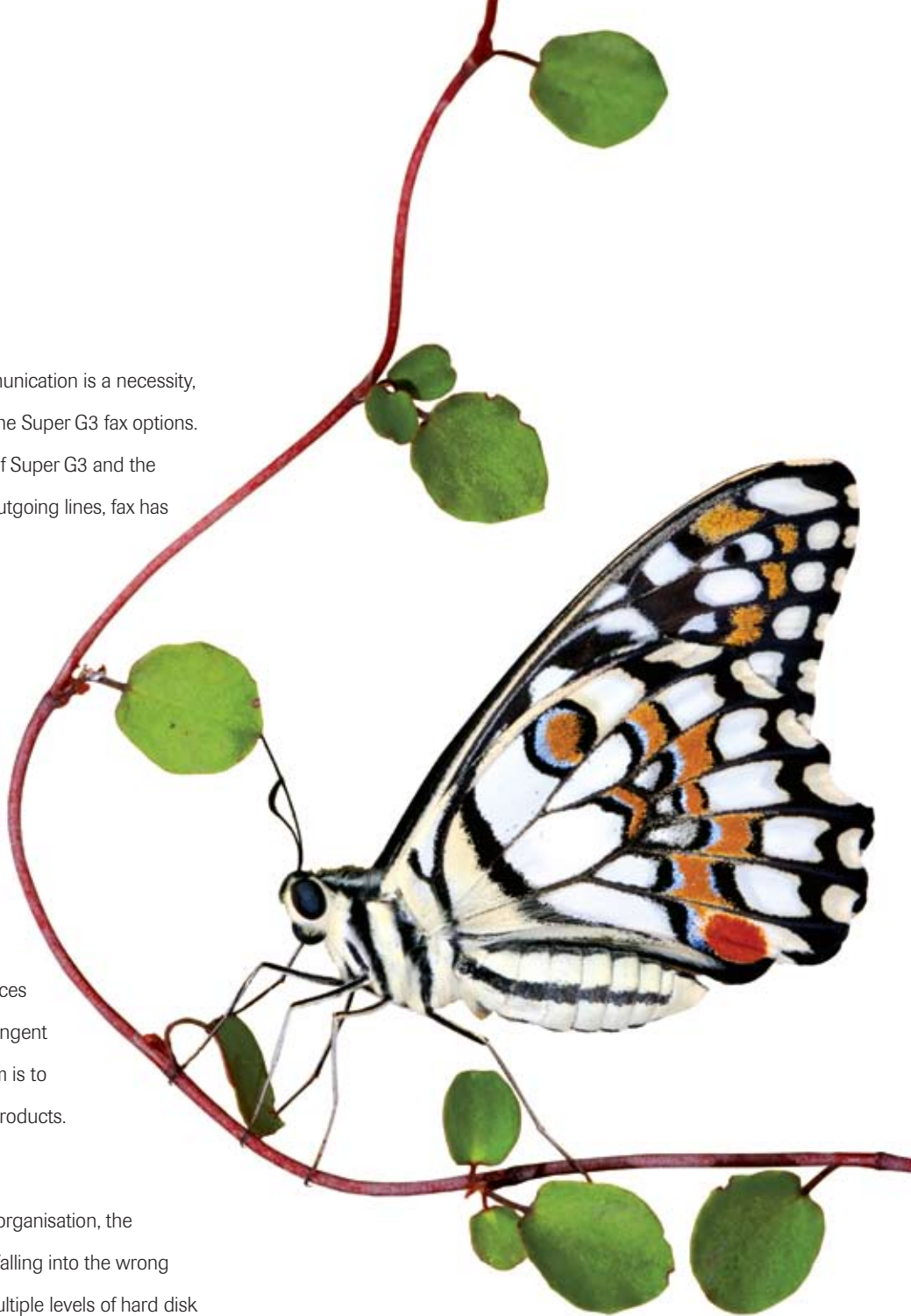
Canon's "eco-tech" approach to creating products emphasises harmony between ecology and technology. From product design to manufacture, we work to conserve energy, maximise product lifecycles and eliminate hazardous materials. These environmentally friendly devices also comply with the European Union's Restriction of Hazardous Substances (RoHS) directive. Considered the most stringent environmental directive in the world, its aim is to eliminate six hazardous substances from products.

Protect information

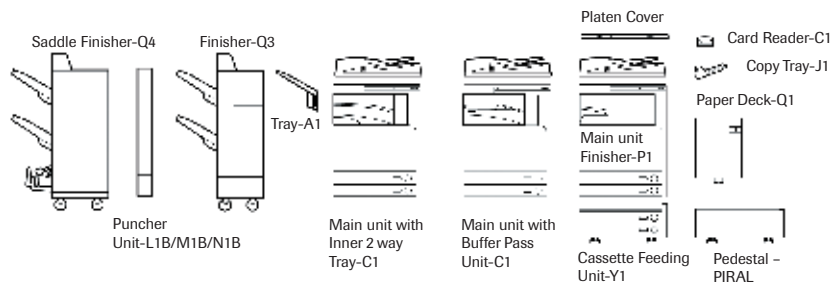
If information security is important in your organisation, the optional Security Kit prevents information falling into the wrong hands with 128-bit data encryption and multiple levels of hard disk overwriting.

Equal Access for all

Optional Equal Access features help the visually impaired and those with physical disabilities. The Voice Guidance feature confirms settings as they are entered, while the Remote Operator feature mirrors the device's display on a workstation or laptop.



iR C3180i specifications



BASIC SPECIFICATIONS	
Type	Digital Multifunctional Imaging System
Imaging System	Laser Dry Electrostatic Transfer
Fixing System	Heat Roller Fixation System
CPU	Dual processors, 1x533MHz and 1x400MHz
Interface	Standard Ethernet (10BASE-T/100BASE-TX)
First-copy Time	8 sec. B&W 23.9 sec. Full Colour
Warm-up Time	Approx. 6 min.
Acceptable Originals*	Sheets, books and solid objects (up to 2kg)
Maximum Original Size*	A3
Copy Sizes	Cassette A5R - A3 Manual A5R - SRA3
Max. Mail Boxes Supported	100
Max. Copy Reservation	5 Jobs
Resolution	Scanning: 600 x 600dpi Copying: 600 x 2,400dpi maximised (colour & b/w) Printing: 600 x 9,600dpi maximised (colour & b/w)
Halftone Density Adjustment	256 Gradations Automatic Exposure/Manual (switchable/9 stages)
Engine Speeds	iR C3180i A4 (b&w/colour) 31/7 pages per minute A3 (b&w/colour) 16/3.5 pages per minute
Duplexing Magnification	Standard automatic stack-less Standard Mode: 100% Preset Reduction: 25%, 50%, 61%, 70%, 81%, 86% Preset Enlargement: 115%, 122%, 141%, 200%, 400% Zoom Mode: 25% - 400% (in 1% increments)
Multiple Copies/Prints Paper Supply	1 to 999 Standard: Dual 550-sheet Paper Cassettes (1,100 Sheets) Stack By-pass (50 Sheets) Optional: Dual 550-sheet Paper Cassettes (1,100 Sheets) Paper Deck - 2,500 Max. Total = 4,750 Sheets
Paper Weights	64 to 163g/m2 (Cassettes) 64 to 163g/m2 (Manual)
Dimensions	(H x W x D) 754mm x 565mm x 755mm
Weight (main unit)	65kg
Power Requirement	240V, 15A, 50Hz/60Hz
DADF (STANDARD)	
Type	Automatic Document Feeder
Originals	A3, A4, A4R, A5, A5R
Original Paper Weight	One-sided scanning: 42 - 128g/m2
Two-sided Scanning	50 - 128g/m2
Original Tray Capacity	50 sheets (80g/m2), 10 sheets (42g/m2)
Original Scanning Speed	28 sheets/minute (A4)
Dimensions (W x D x H)	565 mm x 538 mm x 122 mm
Weight Approximately	8.5kg

INTERNAL FINISHER-P1 (OPTIONAL)	
Paper Weight	64 - 163 g/m2
Capacity Per Tray	No Collating, Collate, Group mode A4, A5, A5R: 500 sheets (or 71mm in height) A3, A4R: 250 sheets (or 35.5mm in height)
Staple Mode	A4: 500 sheets/30 sets (or 71mm in height) A3, A4R: 250 sheets/30 sets (or 35.5mm in height)
No Collating, Collate, Group mode with different paper sizes:	500 sheets (or 71mm in height)
Staple mode with different paper sizes:	500 sheets/30 sets (or 71mm in height)
Max. Stapling Capacity	A4: 50 sheets (64 to 80g/m2) A3, A4R: 30 sheets (64 to 80 g/m2)
Available Staple Size	Corner Stapling: A3, A4, A4R Double Stapling: A3, A4 A3, A4, A4R
Available Offset Size	409mm x 534mm x 201mm
Dimensions (W x D x H)	11.5kg
Weight Approximately	
STAPLE FINISHER-Q3/SADDLE FINISHER-Q4 (OPTIONAL)	
Number of Trays	2 tray (+ optional tray)
Tray Capacity	A4 - A5R 1,000 sheets A3 500 sheets Corner, Double, Saddle Stitch (Q2 only)
Staple Position	A4 50 sheets
Staple Capacity	A3 30 sheets
SADDLE STITCH SPECIFICATIONS (SADDLE FINISHER-Q4 ONLY)	
Paper Size	A3, A5R
Staple Capacity	Colour material: 1 - 10 sheets (40 pages) B&W material: 1 - 15 sheets (60 pages)
Paper Weight	64 - 163g/m2
Dimensions	Q1 536mm x 657mm x 1036mm Q4 648mm x 657mm x 1036mm
Weight	Q1 39.6kg Q4 67.6kg
PAPER DECK-Q1 (OPTIONAL)	
Paper Deck Capacity	2,500 sheets (80g/m2)
Dimensions (W x D x H)	372mm x 591mm x 473mm
Weight Approximately	29.6kg
Acceptable Paper Weight	64-163g/m2
Paper Size	A4
COLOUR NETWORK MULTI-PDL PRINTER KIT	
PDL	PCL6, PostScript3 Emulation and UFR
Resolution	600 x 9,600 dpi (maximised)
Memory	1GB (Uses Main unit RAM)
Hard Disk	80GB (Uses Main unit HDD)
CPU Canon Custom Processor	533MHz and 400MHz (Uses Main Unit CPU)
PS Fonts	Roman136
PCL Fonts	Roman80, Bitmap1, Barcode30, OCR2
Supported Operating Systems	PCL Windows® 95 / 98 / ME / NT 4.0 / 2000 / XP / 2003 PS Windows® 95 / 98 / ME / NT 4.0 / 2000 / XP / 2003, Mac OS X 10.2 or later Windows® 98 / ME / NT4.0 / 2000 / XP / 2003 Mac OS 8 or later Ethernet (100Base-TX/10Base-T), TokenRing (Optional), USB (Optional)
UFR	TCP / IP(LPD) / Port9100 / IPP / SMB), IPX / SPX (NDS, Bindery, NDPGW), AppleTalk TWAIN Driver (75 to 600dpi 24bit color / 8bit greyscale / Black & white)
Mac-PPD Interface	
Network Protocol	
Pull Scan Network	

SUPER-G3 FAX BOARD-S1 (OPTIONAL)	
Applicable Line	Public Switched Telephone Network (PSTN)
Connection Lines	One
Transmission Time*	ECM-MMR Approx. 3 seconds p/page (33,600 bps) MMR, MR, MH, JBIG A5R - A3 Address Book: 1,800 Destinations (Total) Approx. 3,700 pages (Sourced from HDD)
Compression System	MMR, MR, MH, JBIG
Sending Sizes	A5R - A3
Auto Dial Function	Address Book: 1,800 Destinations (Total)
Image Memory	Approx. 3,700 pages (Sourced from HDD)
Max. Confidential Fax Inboxes	100
MULTI SUPER-G3 FAX BOARD-F1 (OPTIONAL)	
Applicable Line	Public Switched Telephone Network (PSTN)
Connection Lines	Two
Transmission Time*	ECM-MMR Approx. 3 seconds p/page (33,600 bps) MMR, MR, MH, JBIG A5R - A3 Address Book: 1,800 Destinations (Total)
Compression System	MMR, MR, MH, JBIG
Sending Sizes	A5R - A3
Auto Dial Function	Address Book: 1,800 Destinations (Total)
Image Memory	Approx. 3,700 pages (Sourced from HDD)
Max. Confidential Fax Inboxes	100
CASSETTE FEEDING UNIT-Y2 (OPTIONAL)	
Number of Drawers	2 Front-loading Adjustable Drawers
Paper Capacity	2 x 550 Sheets
Acceptable Paper Weights	64 - 163g/m2
Dimensions (H x W x D)	251mm x 200mm x 565mm
Weight	30kg
PLAIN PEDESTAL-PIRAL (OPTIONAL)	
Dimensions (H x W x D)	252mm x 565mm x 684mm
Weight	approx. 16.5kg
ADDITIONAL OPTIONAL ACCESSORIES	
• Copy Tray-J1	• FL Cassette-Y1 & Z1
• Document Tray-J1	• Envelope Attachment
• Hole Punch Units	• Internal Two-way Tray-C1
• Platen Cover	• Additional Finishing Tray-A1
• Secure PDF Kit	• Advanced PDF
• Web Access Software Kit	• Voice Guidance Kit-A2
• Card Reader-C1	• Hard Disk Erase Kit
• Hard Disk Encrypt Kit	

* Approximate 3-second-per-page fax transmission time based on ITU-T No. 1 Chart (MMR, Standard Mode) at 33.6 Kbps modem speed when transmitting to another v. 34 machine. The Public Switched Telephone Network (PSTN) currently supports 28.8 Kbps modem speeds or lower, depending on telephone line conditions.

** No A3 option for top cassette. B4 maximum size.

™ All company and/or product names are trademarks and/or registered trademarks of their respective manufacturers in their markets and/or countries. Canon reserves the right to change specifications without notice.



AUSTRALIA

NEW ZEALAND

Sydney	Melbourne	Brisbane	Adelaide	Perth	Canberra	Auckland
1 Thomas Holt Drive North Ryde NSW 2113 Ph (02) 9805 2000 Fax (02) 9887 3650	33 Lakeside Drive Burwood East VIC 3151 Ph (03) 9881 0000 Fax (03) 9881 0444	Southgate Corporate Park 18 Southgate Avenue Cannon Hill QLD 4170 Ph (07) 3909 5000 Fax: (07) 3909 5066	1 South Road Thebarton SA 5031 Ph (08) 8201 9100 Fax (08) 8352 5365	68 Hasler Road Osborne Park WA 6017 Ph (08) 9347 2222 Fax (08) 9242 4120	98 Barrier Street Fyshwick ACT 2609 Ph (02) 6206 5999 Fax (02) 6206 5933	Akoranga Business Park Akoranga Drive Northcote Ph (09) 489 0300 Fax (09) 489 0380