

Canon
advanced simplicity®

**colour imageRUNNER
iR C4080 / iR C4580**

**Powerful colour printers with
multifunction convenience**



Everything to print, finish and distribute in one

Colour printers that make business sense

The imageRUNNER iR C4080 and iR C4580 combine the advantages of a powerful colour printer with advanced multifunction features that make business more efficient.

With the capacity to print at exceptionally high-quality and speed, and then finish documents to a professional standard automatically, the iR C4080 and iR C4580 are ideal for corporate workgroups and print rooms that need to produce a wide variety of documents on demand.

In addition to Canon's print, copy, send, fax and scan features, these devices come equipped with the latest security features to protect information, Canon's MEAP technology for customising device functionality, and options such as Canon Universal Send for distributing documents direct from their touch-screen displays. With all this and more, the iR C4080 and iR C4580 really make business sense.



High-speed printing

Harnessing the latest in printing and processing technology, the iR C4080 and iR C4580 print at 36 and 40 pages per minute in colour, 40 and 45 pages per minute in black & white.

Professional print quality

Canon's innovative REOS (Resolution Enhancement Over Sampling) print board technology produces true 1,200 x 1,200 dpi print quality (9,600 x 1,200 dpi optimised). 256 colour gradations ensure dynamic graphics and photos.

Super fast scanning

The unique Flow Scan system processes multiple double-sided pages at once, enabling scanning up to 70 images per minute at 300dpi in black & white and colour.

Super G3 fax option

Prevent bottlenecks with the Super G3 fax option that transmits at only three seconds per page.* Single and dual-line configurations available.

On-device web access

Use this feature to access documents straight from an intranet or the internet and print them without the need of a computer.

Remote user interface

For convenience, you can control the device from your workstation. Check job status, access device mailboxes, add new users and more.

iW Management Console included

This highly-scalable, web-based software utility makes it easy to set-up and manage devices on a network.

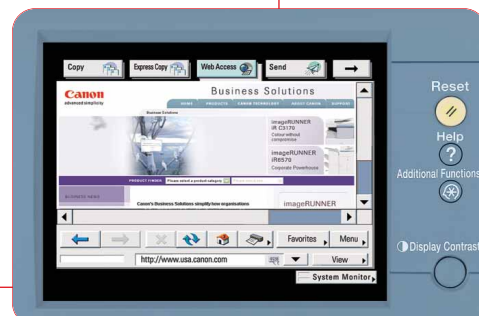


iR C4580 configured with additional cassettes, side paper deck and saddle finisher with hole punch unit

Touch-screen display and keypad



On-device Web browser



Designed with efficiency in mind

Fast and simple to use

On closer inspection, you'll find that every facet of the imageRUNNER iR C4080 and iR C4580 has been designed for maximum efficiency. The smart design of their bodies, for example, provides easy access to all of their external features to improve productivity.

Their large, colour touch-screen displays make operation simple. The step-by-step help screen feature gives you clear instruction as you perform a task. The interactive tutorial CD helps you learn with simulated demonstrations, so you can take advantage of even the most advanced features easily and immediately.



Innovative flat-four design

Both models come equipped with Canon's flat-four print engine. Renowned for its reliability, you're assured of consistent, uninterrupted throughput.

Powerful built-in server

To handle heavy workloads, the built-in server features a unique dual CPU system, 1.5GB of RAM and an 80GB hard drive.

Fast job processing

Canon's imageCHIP technology utilises the dual CPUs to maximise throughput. One CPU is dedicated to the concurrent processing of print, copy, scan and fax jobs, the other to the fast processing of image data.

Three printer kit choices

You have the choice of three printer kit options to match the types of printing your organisation most commonly performs.

Colour Network Multi-PDL printer kit. This economical built-in printer kit utilises the power of Canon's imageCHIP platform to maintain efficiency. It supports PCL 5c and PostScript 3 emulation.

EFI imagePASS H1 printer kit.

Ideal for colour-intensive and multi-user environments, this kit features a dedicated Intel Celeron M 1.5GHz processor. It provides a high level of colour matching and it supports Adobe PostScript 3 and PCL 5e emulation printing.

ColorPASS GX100 printer kit.

This powerful external server is ideal for graphics-intensive and light production printing environments. It features an Intel Pentium 4 3.2GHz processor for running high-end software such as the EFI Graphic Arts Feature Set and it supports Adobe PostScript 3 printing.

EFI System 8 software

Both the imagePASS H1 and ColorPASS GX100 kits include EFI System 8 software for greater control of workflow and image quality. Both kits are variable data printing ready.

Ultra Fast Rendering technology

All three printer kits incorporate Canon's UFR II (Ultra Fast Rendering) print driver language for efficient processing between printer and driver.

Twin-Belt Fusing Technology

Twin-Belt Fusing Technology saves power and shortens warm up time, while enabling the devices to print on a wide range of media stocks and weights..

Environmentally friendly

The iR C4080 and iR C4580 are manufactured to meet the European Union's Restriction of Hazardous Substances (RoHS) directive.



The flat-four, single-pass engine provides easy access to the toner cartridges and paper path



The Fiery imagePASS H1 print controller



The Fiery ColorPASS GX100 print server

High-quality colour printing and finishing on demand

A sensible alternative to outsourced printing

Combining excellent print quality with a wide variety of automatic finishing options, the iR C4080 and iR C4580 are a cost-effective alternative to outsourced printing. From engaging marketing collateral to eye-catching forms and documents, these devices are an economical and efficient way to produce documents on demand.

With the widest range of finishing options in their class, the iR C4080 and iR C4580 give you the capacity to finish all types of documents to a professional standard. Choose from simple collation, stapling and hole punching, through to automatic saddle-stitched booklet making.



Large paper capacity

For interruption-free printing the standard 1200-sheet paper capacity can be boosted to a maximum 5,000 sheets with the optional side paper deck, (2,700 sheets), and the additional cassette pedestal, (1,100 sheets).

Efficient paper handling

To minimise handling chores, the large 100-sheet duplexing automatic document feeder handles all kinds of stock with ease.

Excellent stock versatility

The external paper trays accommodate stocks up to SRA3 in size and 209gsm in weight. The 100-sheet by-pass tray accepts stocks up to 253gsm, as well as selected envelopes and pre-punched paper.

Convenient copy features

Copy Reservation saves up to five jobs in memory and then prints them when the device is free. Job Done sends an email notification when a job is complete.

Copy fast

To speed up copying, program common sets of functions and then copy using the 'quick buttons' on the Express Copy menu.

Advanced security features

To maintain security and meet compliance obligations, you can choose from a variety of document, device and data security features.

Device Signature PDF. This optional feature adds a secure digital signature with the device details to PDF documents.

User Signature PDF. This optional feature adds the user's details to PDF documents.

Secured Print. This feature delays printing until a password is entered at the device.

Security Kit A2. This optional kit protects information on the hard drive with 128-bit encryption and three levels of disk overwriting.

ID Management. Use this feature to set volume limits and control access to the print, copy and scan features for up to 1,000 individuals or groups.



Paper supply system including optional side paper deck



100 sheet duplexing automatic document feeder



Toner replacement is clean and hassle-free

Fast, secure and inexpensive Universal Send

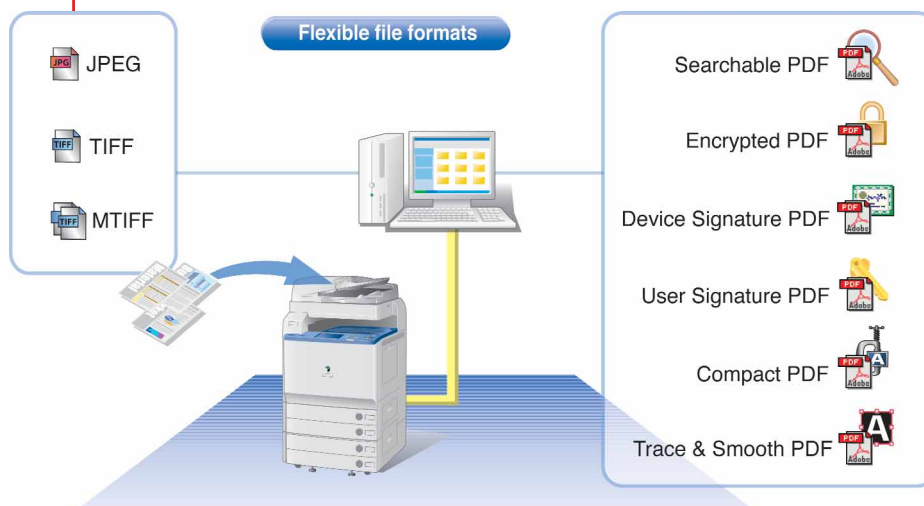
Scan, save and send in one step

Canon Universal Send is an optional feature that provides a fast, secure and inexpensive way to distribute documents in electronic form direct from an imageRUNNER's touch-screen display.

This unique technology enables you to scan, save and send colour documents in common electronic formats including PDF, JPEG and TIFF automatically. In one step you can scan a document and:

- Email it to an individual or group
- Save it on your network
- Store it in an imageRUNNER mailbox
- Send it as an iFAX over the internet
- Send it to a folder on your desktop

Canon's Universal Send offers the widest range of file formats of any MFD device, giving you total flexibility.



Simplify business with an electronic document workflow

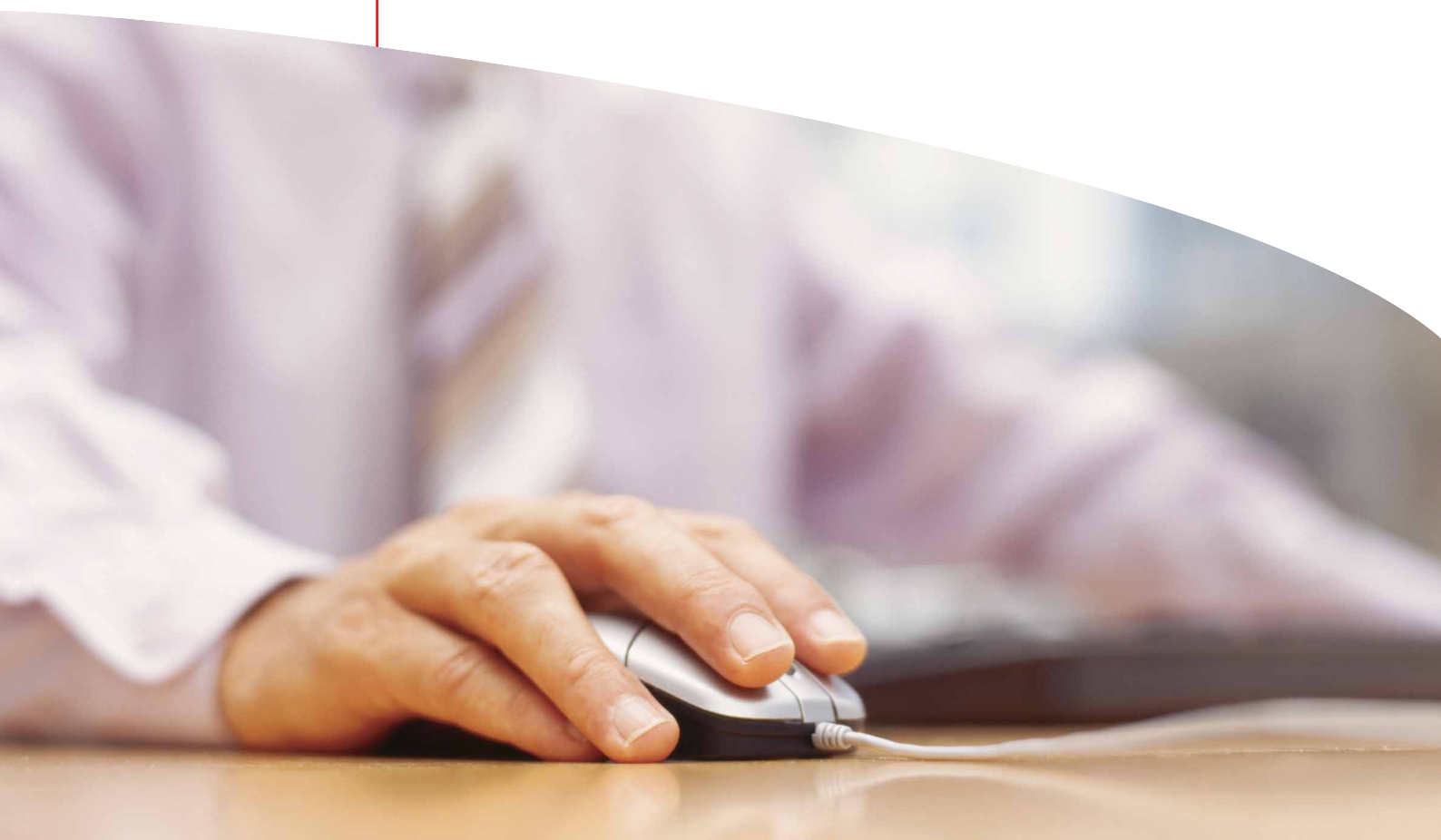
Technology that adapts to the way you work



MEAP or Multifunctional Embedded Application Platform is a unique software platform that enables applications to be installed and run on an imageRUNNER.

This breakthrough Java-based open-platform technology makes business more efficient by transforming the behaviour of an imageRUNNER to suit your organisation's processes.

Put simply, MEAP is like an operating system for imageRUNNER devices. With it both customised and off-the-shelf MEAP applications can be installed on a device and accessed from its touch-screen display or built-in web browser.



Customise functions

With MEAP, you can customise the functions of an imageRUNNER and add-on devices like proximity card readers. As an example, you can use it to customise a device to deal with different documents in different ways automatically.

Automate processes

Depending on the application, MEAP can simplify complex document processing chores, automate tasks like document management and facilitate advanced functionality. The potential for adaptation is virtually limitless.

Ready-made or custom applications

The versatility of the MEAP platform enables you or your choice of developer to create custom software applications specifically for your organisation. Alternatively, choose from a growing range of packaged MEAP applications from Canon. These include:

Secure Print for MEAP. This unique application protects sensitive information and reduces waste by requiring staff members to swipe their building access cards at an imageRUNNER to release their print jobs.

Secure Login for MEAP. With this application you can control access to the copy, scan, email and fax functions of an imageRUNNER. Detailed information about device usage is stored in a log for direct upload to a cost accounting system.

Secure Fax for MEAP. This application uses existing building access cards to control access to the fax function of an imageRUNNER. Connecting directly to your existing fax server, it also saves money as no fax card is required to send faxes from the device.

Canon Document Solutions software

Teamed with an imageRUNNER, these software applications simplify the way your organisation stores, accesses and distributes documents.

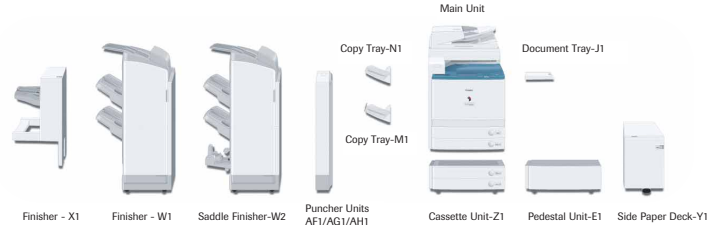
Each of Canon's seven software categories includes a selection of applications to meet the requirements of any organisation. Most can be implemented straight from the box

MEAP applications can be operated directly from the LCD touch-screen panel



Produce professional-looking booklets with the saddle finisher option

imageRUNNER iR C4080 / iR C4580 specifications



BASIC SPECIFICATIONS	
Type:	Colour Digital Multifunctional Imaging System
Imaging System:	Laser Dry Electrostatic Transfer
Developing System:	Dry Dual Component System
Fixing System:	Twin-belt Fixing with Induction Heating
Transfer System:	Intermediate Transfer Belt and Roller
Charging Method:	Ozone-less Roller
CPU:	ImageCHIP Dual CPU design
Interface:	100BASE TX/10BASE-T (RJ-45), USB 2.0, (Host), USB 2.0 (Device)
First-copy Time:	6.7 sec. black & white 9.5 sec. full colour
Warm-up Time:	5 min. or less
Acceptable Originals:	Sheets, books and solid objects (up to 2kg)
Maximum Original Size:	A3
Copy Sizes	
Cassette:	A5R – 305mm x 457mm
Manual:	100mm x 148mm – 320mm x 457mm
Max. Mail Boxes Supported:	100
Max. Copy Reservation:	5 Jobs
Resolution	
Scanning:	600 x 600dpi
Engine:	1,200 x 1,200dpi (true)
Printing:	9600 x 1,200dpi (equivalent)
Halftone:	256 Gradations
Density Adjustment:	Automatic Exposure/Manual (switchable/9 stages)
Engine Speeds	iR C4080 iR C4580
A4 b&w/colour:	40/36 ppm 45/40 ppm
A3 b&w/colour:	23/20 ppm 23/20 ppm
Duplexing:	Standard automatic tray-less
Magnification:	
Standard Mode:	100%
Presets:	5 reductions/4 enlargements
Zoom Mode:	25% – 400% (in 1% increments)
Multiple Copies/Prints:	1 to 9,999
Paper Supply	
Standard:	Dual 550-sheet Paper Cassettes (1100 Sheets) Stack By-pass (100 Sheets)
Optional:	Dual 550-sheet Paper Cassettes (1,100 Sheets) Side Paper Deck – 2,700 Max. Total = 5,000 Sheets
Paper Weights:	64 to 209gsm (Cassettes) 64 to 253gsm (Manual)
Dimensions (H x W x D):	762mm x 620mm x 850mm
Weight:	141kg
Power Requirements:	230V, 7A, 50Hz/60Hz
Power Consumption:	Max. 1,665kW, Standby 350W, Sleep 3W
Time to return from Sleep:	30 seconds or less
Maximum Ozone:	Initial 0.01ppm, After use 0.035ppm
Maximum Noise Levels:	Operating 74dB, Standby 50dB
DADF-M1	
Acceptable Original Sizes:	A5 – A3
Acceptable Paper Weights:	42 – 128gsm
Original Capacity :	100 sheets (80gsm)
Dimensions (H x W x D):	151mm x 576mm x 552mm
Weight:	Approx. 15kg

CASSETTE FEEDING UNIT-Z1	
Number of Drawers:	2 Front-loading Adjustable Drawers
Paper Capacity:	2 x 550 Sheets
Acceptable Paper Weights:	64 – 209gsm
Paper Sizes:	A5R, B5R, B5, A4R, A4, B4, A3
Dimensions (H x W x D):	312mm x 620mm x 705mm
Weight:	Approx. 30kg
SIDE PAPER DECK-Y1	
Copy Size:	A4, B5
Acceptable Paper Weights:	64 – 209gsm
Capacity:	2,700 sheets (80gsm)
Dimensions (H x W x D):	432mm x 324mm x 591mm
Weight:	Approx. 30kg
FINISHER-X1	
Number of Trays:	One
Acceptable Paper Sizes:	99mm x 140mm – 305mm x 457mm
Acceptable Paper Weights:	64 – 253gsm
Max. Capacity:	1,000 Sheets (A4); 500 Sheets (A3)
Staple Mode:	50 Sheets (A4), 30 Sheets (A3) 80gsm
Dimensions (H x D x W):	727mm x 600mm x 401mm
Weight:	Approx. 16kg
FINISHER-W1	
Number of Trays:	Four
Acceptable Paper Sizes:	99mm x 140mm – 305mm x 457mm
Acceptable Paper Weights:	64 – 253gsm
Tray Capacity:	
Top Tray:	250 Sheets (A4)
Middle Tray:	1,300 Sheets (A4)
Lower Tray:	2,450 Sheets (A4)
Staple Positions:	1 – any corner 2 – side margin
Staple Capability:	50 Sheets (A4), 30 sheets (A3)
Dimensions (H x D x W):	1,174mm x 656mm x 679mm
Weight:	Approx. 50kg
SADDLE FINISHER-W2	
Number of trays:	Three
Acceptable Paper Sizes:	99mm x 140mm – 305mm x 457mm
Acceptable Paper Weights:	64 – 253gsm
Tray Capacity:	
Top Tray:	250 Sheets (A4)
Middle Tray:	1,300 Sheets (A4)
Lower Tray:	2,450 Sheets (A4)
Staple Position:	Multi-position Stapling (1) Top Corner (2) Side Margin (3) Saddle-stitch
Stapling Capacity:	50 Sheets (A4), 30 Sheets (A3)
Saddle-stitch Specifications:	
Paper Sizes:	A4R – 305mm x 457mm
Paper Weight:	64 to 105gsm 64 to 253gsm (Cover only)
Stapling Capacity:	15 Sheets (60 pages) at 80gsm
Folding:	V-folding Standard
Dimensions (H x D x W):	1,174mm x 656mm x 679mm
Weight:	Approx. 50kg
Multi PDL Kit-N1	
PDL:	UFR II, PostScript3, PCL5c
Memory:	1.5GB (Shared)
Hard Disk:	80GB (Shared)
CPU:	ImageCHIP Dual CPU design

Resolution:	9600 x 1,200dpi (equivalent)
Supported OS:	Windows 98 / ME / 2000 / XP / 2003, Mac OS 9.0 / X /Linux
UFR II:	Windows 98 / ME / NT 4.0 / 2000 / XP / 2003 / Mac OS 9.0 / X /Linux
PS:	Windows 98 / ME / NT 4.0 / 2000 / XP / 2003 / Mac OS 9.0 / X /Linux
PCL:	Windows 98 / ME / NT4.0 / 2000 / XP / 2003
Interface:	100BASE TX/10BASE-T (RJ-45), USB 2.0 (Device)
Network Protocol:	TCP/IP (LPD / FTP / Port9100 / IPP / IPPS SMB / email), IPX / SPX (NDS, Bindery, NDP5-GW), AppleTalk (PAP)
COLOUR UNIVERSAL SEND KIT-F1	
Type:	Colour network push scanning
Scanning Resolutions:	100 / 150 / 200 / 300 / 400 / 600dpi
Scanning Speed:	70 ipm (b&w and colour at 300 dpi)
Interface:	100BASE TX/10BASE-T (RJ-45), USB 2.0 (Device)
Supported Protocols:	SMB / FTP / SMTP / NCP / WebDAV
Supported OS:	(SMB) Windows 98 / ME / 2000 / XP / Server 2003 / Mac OS 10.4.x / Unix / Linux (using Samba 2.2.8a or later) (FTP) Windows 2000 Server / XP Pro / Server 2003 / Solaris 2.6 / Red Hat Linux 7.2 or later / Mac OS 10.4.x / FTP Server for iW Gateway (NCP) Novell NetWare 5.1/6.0/6.5 (WebDAV) (FTP) Windows 2000 Server / XP Pro / Server 2003 / Windows 2000 Server and Apache 2.0 for Win32 / XP Pro and Apache 2.0 for Win32 / Solaris 2.6 or later, and Apache 2.0 or later / Red Hat Linux Enterprise AS/ES/WS 4.0 or later and Apache 2.0 or later
Supported Formats:	JPEG / TIFF (MMR) / MTIFF / PDF / Encrypted PDF / Searchable PDF / Scalable PDF / Compact PDF / Device Signature PDF / User Signature PDF
ADDITIONAL OPTIONAL ACCESSORIES	
• Super G3 Fax Board-V1 (Single)	• Super G3 Fax Board-H1(Dual Line)
• Copy Tray-N1 (Face down)	• Copy Tray-M1 (Face up)
• FL Cassette-X1 (spare)	• Document Tray-J1
• Hole Punch Units AH1(2 holes)/AG1 (3 holes)/AF1 (4 holes)	
• imagePASS-H1 Print Controller	• ColorPASS GX100 Print Server
• Advanced PDF Kit-A1	• Secure PDF Kit-A1
• Digital User Signature PDF-A1	• Barcode Print Kit-A1
• Web Access Software Kit-E1	• Security Kit-A2
• Security Expansion Board-E1	• Voice Guidance Kit-A2
• Remote Operator Software-A2	• Plain Pedestal-E1

TM All company and/or product names are trademarks and/or registered trademarks of their respective manufacturers in their markets and/or countries.

Canon reserves the right to change specifications without notice.



AUSTRALIA

Sydney
1 Thomas Holt Drive
North Ryde NSW 2113
Ph (02) 9805 2600
Fax (02) 9887 3137

Melbourne
33 Lakeside Drive
Burwood East VIC 3151
Ph (03) 9881 0000
Fax (03) 9881 0316

Brisbane
Southgate Corporate Park
18 Southgate Avenue
Cannon Hill QLD 4170
Ph: (07) 3909 5000
Fax: (07) 3909 5068

Adelaide
1 South Road
Thebarton SA 5031
Ph (08) 8201 9193
Fax (08) 8352 2810

Perth
68 Hasler Road
Osborne Park WA 6017
Ph (08) 9347 2258
Fax (08) 9242 4120

Canberra
98 Barrier Street
Fyshwick ACT 2609
Ph (02) 6206 5999
Fax (02) 6206 5933

NEW ZEALAND

Auckland
Akoranga Business Park
Akoranga Drive
Northcote
Ph (09) 489 0300
Fax (09) 489 0399

Compact PDF

Prevent documents clogging your network with the PDF compression kit. Simply select PDF compact when scanning to produce a PDF up to a tenth the size.

Automatic text smoothing

The Trace & Smooth option improves the quality of text in PDF documents by removing any jagged outlines, while maintaining a compact file size. It even allows text and line art elements to be edited as scalable artwork in Adobe Illustrator®.

Find information fast

The Searchable PDF option makes it easy to find information later using Adobe Acrobat. Select searchable PDF to save a document as full-text searchable automatically.

Share information securely

Password protect documents before sending with the optional PDF-encryption feature, preventing unauthorised printing or editing. Tag and track documents with the Send ID feature.

Handy built-in mailboxes

imageRUNNER mailboxes are a convenient place to store things like frequently used forms for printing on demand. Set up to 100 mailboxes and store 6,000 pages of information.

Advanced mailbox features

Use the advanced features to edit and merge documents on the device before sending or printing. Use URL Send to reduce network congestion by sending a URL link rather than the document itself.

Flexible electronic document distribution with Colour Universal Send

